



Sussex Sea Fisheries District Committee  
Annual Report 2008



# Contents

Foreword	4
Introduction	5
Membership and staffing	6
The district	7
Fisheries protection vessels	8
Managing inshore fisheries and the marine environment	9
Summary of enforcement activity	10
Collaborative activities with statutory bodies	11
Environmental management	12
Research, development and consultation	13
Publicity and education	14
Fish landings into Sussex	15
The fishing fleet	16
Accounts	17
Byelaws	20
Example information to fishermen	21

# Foreword

At the State Opening of Parliament in December 2008 The Queen's speech outlined the Marine and Coastal Access Bill. The announcement was a milestone in the future management of the UK's Marine Environment. A national Marine Management Organisation will be established and Sea Fisheries Committee will be replaced by the Inshore & Fisheries Conservation Authorities (IFCAs) within the next three years.

Parliamentary process will involve careful scrutiny of the Act in the Chambers and Committees during 2009. Given the complexity and interest in the legislation, its progress is expected to provoke considerable debate at all stages. It is expected the Act should receive Royal Assent late in 2009.

Work has already commenced on IFCA implementation involving government officials and officers and members from the Sea Fisheries Committees. The anticipated date for establishment of the Inshore Fisheries & Conservation Authorities is 1<sup>st</sup> April 2011.

During 2009 the Minister for Marine and Natural Environment, Huw Irranca-Davies MP will be required to take a decision on the number and extent of IFCA Districts and their boundaries. It is important that SFCs are fully engaged in this process and have an early and clear picture of intended IFCA structures.

Nationally Defra has implemented licensing measures intended to reduce fishing capacity in the English under 10 metre sector. In the Sussex District approximately 90% of vessels are below 10 metres in length and virtually all their fishing activity is undertaken within the Committee's jurisdiction. Many have found the national management decisions difficult to reconcile with government policy on support for inshore fishing communities and encouraging sustainable methods of fishing that have a low environmental impact.

Given the biological and economic fragility of the marine environment and associated inshore fisheries any management measures whether national or local need to recognise and secure opportunities for those operators that are most vulnerable, whilst maintaining adequate protection for the marine environment.

To that end the Committee's officers have made significant progress in improving our understanding of the marine environment and its relationship to fishing activities in Sussex coastal waters. This has supported and strengthened various Committee initiatives. Both Committee led, and partner project work involving nationally respected research organisations have produced high quality spatial information on bathymetry, marine geology, habitats and species distribution.

This information is the cornerstone to better marine fisheries and environmental management within the District. Importantly this information will support the intended development of Marine Conservation Zones and enable the needs of commercial and recreational fishermen to be effectively considered in the forthcoming designation process.

In achieving its sustainability objectives the Committee continues to develop its management regime towards principles of biological sustainability established by the Marine Stewardship Council (MSC). In 2009 the Committee intends to begin a national pilot project that develops an approach to independently audited fisheries management, working toward MSC fisheries certification. There is increasing demand and recognition for the opportunities MSC certification can offer.

The range of issues facing officers did not diminish, as we move into 2009 the Committee's officers are well positioned to respond to both national and local issues.



A handwritten signature in black ink, appearing to read 'T.M. Dapling'.

Mr. T.M. Dapling  
M.Sc.  
Chief Fishery  
Officer & Clerk

# Introduction

The Sussex Sea Fisheries District Committee is a statutory body established in 1893 under the Sea Fisheries Regulations Act 1888. The Committee is one of 12 SFC's established in England and Wales. Funding is provided by means of an annual precept on local authorities with a coastal jurisdiction (East & West Sussex, Kent and Brighton and Hove City Council). The Committee meets on a quarterly basis, with the Annual Meeting held in July. The Committee's core responsibility is the management and enforcement of fisheries legislation, this responsibility is defined in various Acts, including The Sea Fisheries Regulations Act 1966. The Committee has powers to make and enforce byelaws for the protection of fisheries within its jurisdiction. The Committee also has powers to enforce specific National and European fisheries regulations.

The Committee also has legal duties for the protection of the marine environment. In addition to these responsibilities the Committee undertakes further activities that include the collection of data on the fisheries and basic stock assessment work. The Committee is a statutory consultee on marine development in accordance with The Food & Environmental Protection Act 1985, and provides expert advice through consultation and membership of coastal fora.

## Aims

*“To regulate, protect and where appropriate develop sea fisheries within the Sussex district in order to ensure their sustainability both now and into the future and to balance the needs of the fisheries in the context of a sustainable marine environment”.*

## Objectives

- *To promote and enact byelaws and other appropriate regulations.*
- *To effectively and efficiently enforce, monitor and administer byelaws and relevant regulations throughout the Committees' jurisdiction.*
- *To, where resources allow, monitor the fishery and the marine environment.*
- *To, where possible and appropriate, promote and facilitate dialogue between fishery interests in order to improve the management of the marine environment.*
- *To have regard to the precautionary principle and the sustainable development of the marine environment when undertaking Committee function.*
- *To develop the role of the Committee with respect to fisheries and marine environmental management.*

*Left: Fishery officers inspecting a oyster catch*

*Centre: F.P.V. Delta One*

*Right: A fishing boat in Chichester*



# Membership and Staffing

The Committee is composed of 20 members, 10 County Councillors who represent the constituent authorities that fund the Committee, and 9 members appointed by The Department of Environment Food and Rural Affairs (DEFRA), formally the Ministry of Agriculture Fisheries and Food. The DEFRA appointed members are persons with a distinct connection to the local sea fishing industry, such as vessel skippers/owners, fish merchants, etc. These appointments also take into account recreational fishing within the district. Importantly, Committee members do not represent their own interests but the needs of the fishery as a whole, they utilise their understanding and experience of the fishery in the consideration of the management needs. In addition to these members the Environment Agency (EA) make one appointment to the Committee. The provision is made for the inclusion on the Committee of a member who is conversant with the environmental conservation needs of the district.

## **Committee Membership (2008)**

### **Kent County Council**

Councillor F. Wood-Brignall

### **Brighton & Hove City Council**

Councillor M. Davis

Councillor E. Kemble

### **West Sussex County Council**

Councillor M. Daws-Chew

Councillor D. Urquhart

Councillor P. Graysmark

### **East Sussex County Council**

Councillor J. Wilson

Councillor J. Livings

Councillor B. Gadd

Councillor R. Thomas

### **Environment Agency**

Mr. C. Bacchus

### **Appointments by DEFRA**

Mr. D. Harvey (Chairman)

Mr. A. Delahunty (Vice-chairman)

Mr. B. Brock

Mr. S. Flint

Mr. A. Brothers

Mr. G. Doswell

Mr. M. Barrow

Mr. R. Simmons

Mr. D. Guy

## **Full Time Staff**

Chief Fishery Officer & Clerk

Mr. Tim Dapling B.Sc. M.Sc.

Senior Fishery Officer & Deputy Clerk

Mr. Robert Clark B.Sc. M.Sc.

Patrol Vessels Master

Mr. Charlie Hubbard

Patrol Vessels Mate

Mr. Mark Hayes

Fishery and Research Officer

Ms. Belinda Vause B.Sc.

Fishery Officers

Dr. Alberto Kavadellas B.Sc. P.h.D.

Ms. Rebecca Korda

## **Part Time Staff**

Solicitor, Treasurer & Secretary

Mr. Andrew Theaker LLB

Administrative Assistant

Mrs. Sally Jordan

Marine Engineer

Mr. Andrew McCallum



# The District

## The Boundaries

The Committee's marine jurisdiction covers an area extending from Hayling Island in the west to Dungeness Point in the east, with a seaward limit measured six nautical miles from territorial baselines. This equates to approximately 1000 square miles of coastal water. The western extent of the district extends into the County of Hampshire and the eastern extent of the district encompasses an area in the County of Kent. The landward jurisdiction for the purposes of enforcement activity is dictated by the boundaries of the constituent local authorities.

## The Environment

The marine environment in the district is one of contrast, from the almost continuous cover of mobile Holocene sand ridges from Beachy Head east, to the chalk reef exposures off Littlehampton, then to the muddy estuarine environment of Chichester Harbour.

## The Resource

The Sussex district has a diverse mixed fishery. Fish resources are targeted through a

variety of static and mobile gears. Different gear is deployed according to the target species. A wide range of fish are caught off the Sussex coast, they include round fish such as cod and whiting, flatfish primarily sole and plaice, the crustaceans crab and lobster and molluscs including cuttlefish, scallops and whelks. Target species will vary with the season. Factors such as species' life cycle, closed periods, and quota allocations will influence the seasonality of the fishery.

## The Fleet

The fishery in Sussex is predominantly inshore in nature. There are in the region of 300 vessels registered in the district fishing from eleven principal 'stations'. There are more than 40 commercial angling vessels that operate out of Sussex ports. The majority of vessels working the district's waters are multi-purpose in their design; this enables the vessels to target different species according to their availability. The proximity to particular fishing grounds will also play a part in the type of vessel working from the various ports; in Selsey for example virtually all of the boats

are geared to fish static pots due to the proximity to hard substrates suitable for crustacean. Long stretches of the Sussex coastline have no natural or man made harbours; to overcome this vessels at Worthing and Hastings launch from the beach and at Selsey they use offshore moorings, and move into Chichester Harbour during extended periods of strong winds. Although the majority of the Sussex fleet are less than ten metres in overall length, Sussex is an important base for larger offshore fishing vessels. Shoreham and Newhaven, with their deep-water moorings are used by nomadic vessels moving through the district or as temporary bases from which to fish offshore areas in the Eastern English Channel.

## Recreation

The high population density along the coastal belt and the proximity to London means the south coast has significant recreational value and use. Angling and scuba diving are both extremely popular, and are encompassed within the Committee's fisheries management function.

*Left: A beam trawl*

*Centre: A fishery officer measuring a lobster*

*Right: A Hastings boat coming to the beach to land*



# Fisheries Protection Vessels

To enable marine management tasks to take place safely and efficiently the Committee operates two independent patrol craft built and equipped for specific enforcement needs.

## Watchful

Built in 2003 Fisheries Patrol Vessel 'Watchful' is a modern inshore fisheries management vessel. 18 metres in length the 35 metric tonne semi displacement craft built from aluminium alloy construction is powered by two turbo charged diesel marine engines which together deliver over 700 horsepower at each shaft and a sprint speed of 24 knots.

The bridge carries a comprehensive electronic navigation system, with a fully integrated electronic chart display, dual radar and advanced sounder capacity. An onboard computer network provides data management for enforcement and scientific purposes allowing small office facilities at sea. A survey grade acoustic system enables the vessels

equipment to assess not only depth but also record bottom characteristics for mapping needs. To improve its capacity to monitor and map and display, Watchful was fitted with a new acoustics system known as 'Olex' during 2008. This is able to display a three dimensional picture of the seabed depth and hardness in real time. These systems are increasingly used on fishing vessels as a aid to fishing.

Marine communications aboard Watchful include VHF sets with automatic distress and direct selective calling. A 3G connection facilitates fax and data calls and access to the World Wide Web and a ready link to the office base.

Officers board vessels to be inspected from a Delta 5.5 metre RIB, launched from an integral stern ramp. The RIB is powered by a 1.7 litre 130 horsepower inboard turbo diesel engine, providing a maximum speed in excess

of 35 knots. On the aft deck Watchful also has a hydraulic deck winch and stern gantry for the deployment of monitoring and survey equipment.

## Sea Harrier

'Sea Harrier' is an 8.7 metre fast semi Rigid Inflatable Boat (RIB). The RIB is used for routine patrols and fast interception work and is effective in shallow water. The vessel has a top speed of over 30 knots and a range of 200 nautical miles. Sea Harrier is vital to Committee sea-going enforcement in specific inshore sea areas. The RIB is deployed from spring to autumn and requires two officers to operate the vessel, which allows sea-going capability during periods of reduced available manning and downtime on Watchful due to maintenance.

*Left: F.P.V. Watchful*

*Centre: Locally caught seabass*

*Right: Fishery officers recovering a lost fishing net*



# Managing Inshore Fisheries & the Marine Environment

The Committee employs a team of nine, including both full and part-time staff. Their experience and intimate knowledge of the local inshore area, and those who depend upon it is central to the Committee's ability to protect the fisheries and marine environment.

## **The Enforcement Team**

The Committee's six full-time warranted fishery officers are a multi-disciplined team of professionals, whose skills are diverse, and whose varied backgrounds are routed in fisheries and the marine environment. One important facet of these skills is the enforcement officers' considerable seagoing experience. Three staff currently undertake an external role as serving crewmembers for the Royal National Lifeboat Institution.

In the course of their duties fishery officers patrol by day or at night at sea or on land throughout the extent of the Sussex Sea Fisheries District. The Committee's

officers undertake inspections at sea by means of the Committee's patrol vessels, and ashore, officers use a Committee patrol vehicle to visit and inspect both premises and vessels in harbour. The summary of enforcement section in this report details the number of patrols and the number of inspections conducted in 2008. In addition to Fisheries Protection duties the Committee is contracted to East Sussex Fire & Rescue Service and operates as a fire support vessel to the offshore fire fighting team.

## **Management, Administrative & Maintenance**

Enforcement officers rely on management and administrative support from senior officers and the Committee's administrative staff. The Committee's links to local County Councils offers access to specific service needs including personnel support and finance departments.

## **Summary Powers**

For the purpose of enforcing the Committee's Byelaws, National and EC Fisheries Regulations

Committee officers have powers under the Sea Fisheries Regulation Act 1966. These powers include the power to stop and search any vessel or vehicles used in fishing or the conveying of sea fish or to examine any instrument used in fishing for sea fish. Officers have the powers of a constable for the enforcement of Local Sea Fisheries Byelaws and certain National and EC Fisheries Regulations. Any person obstructing the officer in carrying out his duties is guilty of an offence. The Sea Fish Conservation Act 1967 empowers an officer within the district at all reasonable times to go on board any fishing boat or enter any premises used for the sale or storage or treatment of sea fish and search for, and examine any sea fish and seize any such sea fish contravening any Order made under the Act; to go on board any registered British Fishing Vessel and search for, and examine all nets or other fishing instruments carried in that boat and to seize any net or other such fishing tackle contravening the Act.

*Left: A trawl's codend being emptied*

*Centre: A Sussex crab*

*Right: Scallops being emptied on deck*



# Summary of Enforcement Activity

Inspection Method	January	February	March	April	May	June	July	August	September	October	November	December	2008 Total	2007 Total
Vessels monitored (sea patrol) <sup>1</sup>	60	146	70	106	197	169	51	27	225	94	189	85	1419	1487
Vessels boarded (sea patrol) <sup>2</sup>	11	55	1	29	11	8	44	8	49	1	44	18	279	177
Full inspections (road patrol) <sup>3</sup>	36	6	16	15	8	11	48	21	6	7	5	0	179	73
Markets/Vessels monitored (road patrol) <sup>4</sup>	35	4	15	23	40	5	119	50	5	62	2	0	360	141
Premises/Others Inspected (road patrol) <sup>5</sup>	41	3	20	7	7	23	53	27	10	6	9	0	206	93
<b>Total</b>	<b>183</b>	<b>214</b>	<b>122</b>	<b>180</b>	<b>263</b>	<b>216</b>	<b>315</b>	<b>133</b>	<b>295</b>	<b>170</b>	<b>249</b>	<b>103</b>	<b>2443</b>	<b>1971</b>

## Patrols by Method

Road	11	1	6	4	2	3	13	8	4	5	2	0	59	42
Sea	3	12	6	11	9	12	7	2	13	11	13	7	106	99
<b>Total</b>	<b>14</b>	<b>13</b>	<b>12</b>	<b>15</b>	<b>11</b>	<b>15</b>	<b>20</b>	<b>10</b>	<b>17</b>	<b>16</b>	<b>15</b>	<b>7</b>	<b>165</b>	<b>141</b>

## Offences detected

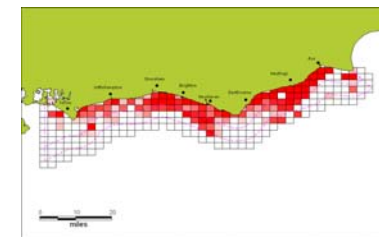
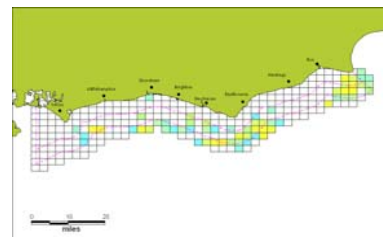
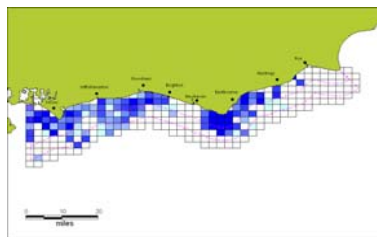
Offences reported	0	1	0	0	0	0	0	0	0	1	0	0	2	1
Warnings	1	3	0	3	0	1	4	1	0	0	2	0	15	4

The marine conservation regulations enforced include; European Regulations, British Statutory Instruments or Local Committee Byelaws (see byelaw section), all application of regulations complies with the relevant statutory requirements which include the Police & Criminal Evidence Act 1984. Further to the recorded information above officers engaged in enforcement activity liaise with members of the fishing industry and the general public with regard to legislative and other matters.

*Left: observed whelk potting*

*Centre: Observed scallop dredging*

*Right: Observed fixed netting*



# Collaborative activities with statutory bodies

During 2008 a range of collaborative activities took place. Some joint work directly related to the Committees statutory function as a sea fisheries manager, whilst other various marine activities were undertaken in the course of normal patrol duties.

## **Marine Fisheries Agency & Royal Navy**

On behalf of Defra and UK government The Marine and Fisheries Agency (M&FA) implement national and European fisheries policy. They are supported by the Royal Navy's Fisheries Protection Squadron (RNFP). Both a national and regional interagency fisheries enforcement group exist that include the M&FA, SFC's and the Environment Agency (EA).

## **Environment Agency**

Committee byelaws regulate the use of nets in inshore waters; this provides direct assistance to the EA whose responsibilities include the management of salmonids and eels which can be found in many Sussex Rivers and coastal areas. The EA has a representative who is a member of the Committee. SFC Officers conduct joint patrols with EA colleagues.

## **Sea Fisheries Committees**

Officers develop and maintain good working arrangements with other Committee officers. Chief Officers meet on a regular basis to address common issues of management in England and Wales. Senior technical officers attend a number of national science and research based events. The Sussex SFC has a cross warranting arrangement with both Southern and Kent & Essex SFC's.

## **East Sussex Fire & Rescue Service (ESF&RS)**

The Committee continued to maintain its support role for offshore fire fighting with the Sussex Marine Incident Response Group (MIRG). Watchful was designed and constructed with specific gear stowage adaptations. The vessel is designated as the safety vessel that provides emergency cover in the event of a marine incident involving MIRG.

## **Royal National Lifeboat Institution (RNLI)**

The RNLI's importance in search and rescue service is valued by all mariners and particularly those within the fishing industry, who work in such a high-risk occupation. The majority of the Committee's officers are active

RNLI crew, and where possible the Committee support 'Search and Rescue' operations.

## **Local Authorities, Environmental Health (EH) Departments**

Officers work with local EH officers concerning issues of shellfish gathering and compliance to health and hygiene regulations, which designate where shellfish maybe gathered for commercial use.

## **Sussex Police**

The Committee have regular contact with Sussex Police on maritime matters. The Sussex Police divers are also based at Shoreham Airport and are familiar with the Committee's vessels and local activities.

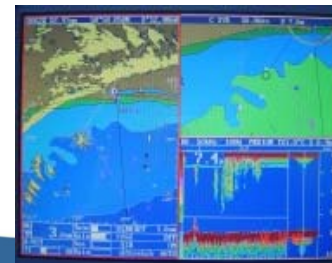
## **Maritime & Coastguard Agency**

The MCA is a valuable supporting organisation in all marine operations undertaken by the Committee. Sector Stations are able to provide assistance on communications and their surveillance of specific VHF channels supports enforcement communications.

*Left: attendees at the annual Chichester oyster workshop*

*Centre: One of Watchful's navigation displays*

*Right: A stern trawler fishing Sussex waters*



# Environmental Management

## Environmental Responsibilities

The management of sustainable fisheries relies on the effective management of the wider marine environment; it is right therefore that the Committee's role extends to wider marine environmental management. In some instances responsibilities are laid out in statute, and the nature of that role is defined therein. In some instances the responsibility however goes beyond that defined in legislation and in many cases the principles of sustainable management are discharged through consultation.

## The Acts

The Committee's responsibility for the protection of the wider marine environment are laid out in three principle pieces of legislation, they are: The Environment Act, 1995, The Sea Fisheries (Wildlife) Conservation Act, 1992, and The Conservation (Natural Habitats Regulations &c.) Regulations, 1994. The Environment Act 1995 amended The Sea Fisheries Regulation Act

1966 to allow Sea Fisheries Committees to make byelaws to control fisheries for environmental reasons, as well as for fisheries management, and provides for people with environmental expertise to be included on their Committees.

The Sea Fisheries (Wildlife) Conservation Act 1992 requires Sea Fisheries Committees to have regard to the conservation of marine flora and fauna when exercising their functions, and to endeavour to achieve a reasonable balance between that and other considerations in the discharge of their functions under the Sea Fisheries Acts.

The Conservation (Natural Habitats Regulations & c.) Regulations 1994 require the Sea Fisheries Committee to comply with the Habitats Directive. This responsibility is an example of the European Union's requirement to integrate environmental needs into fisheries legislation.

## Conservation Designations

There exist a number of statutory and non-statutory marine conservation areas throughout the district. There are three European Marine Sites within the Committee's jurisdiction they are; Dungeness to Pett Level European Marine Site, Pagham Harbour European Marine Site, Solent European Marine Site (Chichester Harbour).

During 2008 the Committee continued dialogue with other competent and relevant authorities working towards the development of a single scheme of management for the Solent European Marine Site.

Voluntary designations include the Seven Sisters Voluntary Marine Conservation Area, and various marine sites of nature conservation importance (mSNCI). The SeaSearch project identifies mSNCI and local authorities make the designations.

*Left: Kelp and red seaweeds (moderate energy infralittoral rock), EUNIS biotope code 3.21*

*Centre: A thornback rack*

*Right: A Sussex lobster*



# Research, Development and Consultation

## Introduction

The collection of information on the state of the fisheries off Sussex is fundamental to its effective management. Where possible the Committee undertakes primary research projects, usually where no other information source is available. In addition to primary research the Committee's Officers refer to suitable research papers and liaise closely with DEFRA's executive agency the Centre for Environment Fisheries and Aquaculture Research (CEFAS). Furthermore, communication with non-governmental organisations including fisheries and marine environmental consultants is maintained.

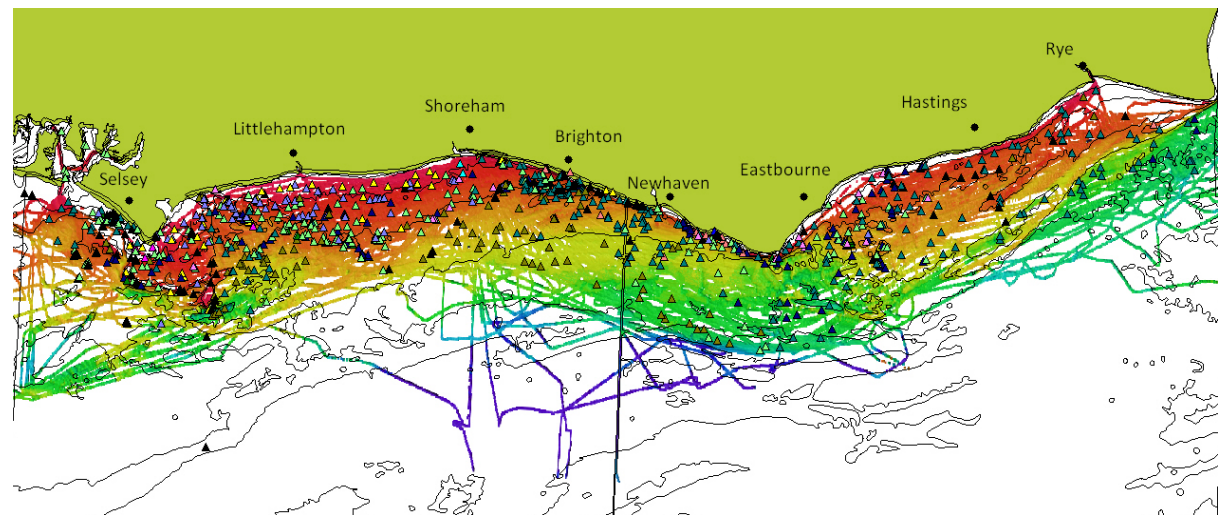
## Research & Development

During 2008 the Committee have continued to collect information to inform their management process. Working in partnership and with external organisations and with grant funding the Committee have significantly increased their data resources; significantly during 2008 a bathymetric model of the entire District was generated from novel datasets. This information, in combination with over 1000 interpreted seabed descriptions, takes the Committee close to realising its vision to map the Sussex seabed at a scale relevant to management. Nationally, for the first time at a relevant scale, relationship between seabed type and fishing activity is beginning to emerge.

## Consultation

Membership to specific statutory and non-statutory bodies enables the Committee to influence decision-making processes, at both a local and national level. Local and regional marine issues that may involve the Committee are diverse, and include shoreline protection, mineral resource exploitation, discharge and extraction consents and navigation matters. Nationally the Committee was able to contribute during the development of Government policy. The Committee's role includes the implementation of specific European regulations for fisheries conservation, and thus ensures that the Committee contributes to policy change at a European level.

*An illustration of the data held in the Committee's Geographic Information System: here a bathymetric model is used to resolve geological morphology when overlaid by interpreted seabed data points.*



# Publicity & Education

## Introduction

An important component of the Committee's work is publicity, henceforth promoting their activities and the role of the Committee. Suitable modern means are used to present and deliver information on fisheries regulations, which increases the awareness of the general public, and fisheries stakeholders alike. In turn this demonstrates the importance of the inshore fisheries and the measures taken to conserve them.

## The Committee on the Web

The Committee has continued to update its website [www.sussex-sfc.gov.uk](http://www.sussex-sfc.gov.uk). The site now provides access to the full MALSF (Marine Aggregate Levy Sustainability Fund) project, 'The Seabed and Inshore Activity: Assessment and Relationship' including an interactive chart to view video and still images of the seabed habitats within the district. The 'Latest News' section has been kept up to date with numerous articles from warning about an invasive wrinkle species to the implementation of IFCA's and it has continued to advertise the

role of the Committee and the districts byelaws.

## Public Events

Committee officers and patrol vessels attended many local events during 2008 including; the Chichester Harbour Work Boat Show, the Simmons Quay Rye Harbour Anniversary, the Sussex Yacht Club Open Day, Littlehampton Regatta and acted as the safety vessel for the Fecamp Royal Escape Race. At all of these events officers engaged with general public to increase the public awareness of the Committees work. At a national level numerous technical meetings and events were attended by officers including; the MALSF technical meeting in Essex where the Committees habitat mapping work was presented to a national audience and the DEFRA Marine Day in Whitehall to discuss the implications of the Marine Bill.

## Industry Interaction

Interaction with local industry continued to be very active in 2008. A meeting with

representatives of the whelk industry was organised to provide a forum for discussions on the districts whelk fisheries. Scientists from CEFAS were in attendance and the Committee believes it was enlightening for everyone. In Chichester the annual oyster meeting was held, again with guest speakers from CEFAS and information and advice was provided to fisherman about the environmental threats to the oyster stocks including invasive species and diseases.

## The Committee in the Media

Fisheries are a popular topic for the media and the Committee has continued to get involved. For many of the local events attended by officers subsequent newsletter or newspaper articles were published. In addition the Committees research and enforcement work has appeared in the local 'Argus' newspaper and nationally in the 'Fishing News'. The Committee also collaborated with the UKTV programme 'Mitch and Matt's Big Fish'.

*Left: Officers present at a public open day in Rye*

*Centre: An abandoned net is brought ashore*

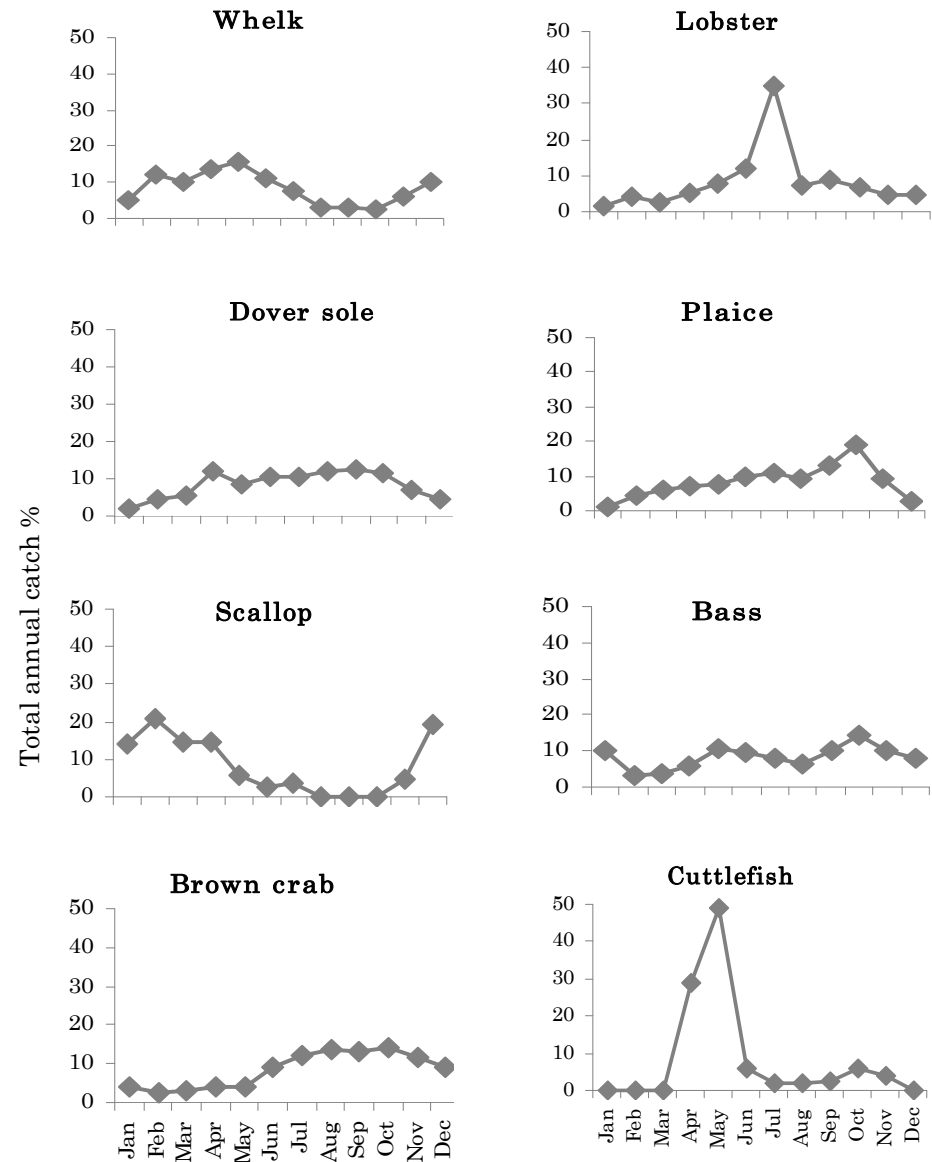
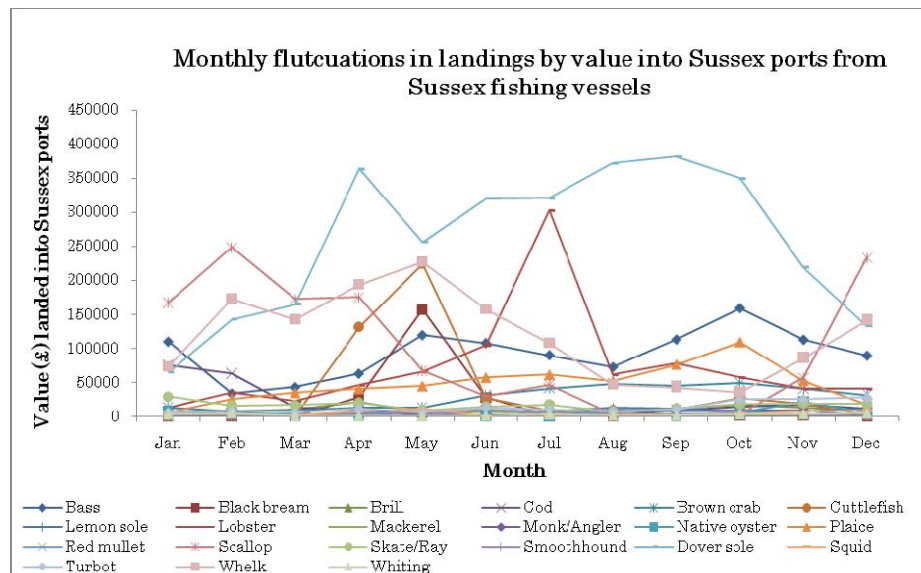
*Right: A large mullet*



# Fish landings into Sussex

## Species Seasonal Fluctuations

The Sussex fishery is exceptionally diverse. In 2008 it is estimated that 100 different species of fish and shellfish were commercially landed into the District. Seasonality was especially apparent in certain fisheries, in particular with Cuttlefish (*Sepia officinalis*), Spider Crabs (*Maja squinado*) and Bream (*Spondyliosoma sp.*) which migrate into the sea at certain times of the year and with Oysters (*Ostrea edulis*) and Scallops (*Pecten maximus*) which are protected by seasonal closures. In contrast bass (*Dicentrarchus labrax*), whelks (*Buccinum undatum*) and flat fish such as plaice (*Pleuronectes platessa*) and sole (*Solea solea*) were more stable throughout the year. Presented here is a graph which shows the seasonal fluctuations of the most valuable species landed into Sussex ports, and graphs showing the seasonal fluctuations in landings of individual species.



# The Fishing Fleet

	Chi	Selsey	Bognor	L'hampton	Worthing	Shoreham	Brighton	Newhaven	Eastbourne	Hastings	Rye	Dungeness	Total
Total Landing Vessels	12	54	10	25	11	127	37	100	59	57	54	13	559
Total Home Vessels	14	35	4	13	10	33	19	26	26	71	26	9	286
Home Vessels Over 10m	0	6	0	0	0	5	0	3	2	3	2	0	21
Home Vessels Under 10m	14	29	4	13	10	28	19	23	24	68	24	9	265
No. of Home Vessels Using Static Gear*	6	28	3	11	10	25	18	22	23	41	11	6	204
No. of Home Vessels Using Towed Gear*	1	2	0	0	0	5	0	3	0	4	1	0	16
No. of Home Vessels Using Static & Towed Gear**	7	5	1	2	0	3	1	1	3	26	14	3	66

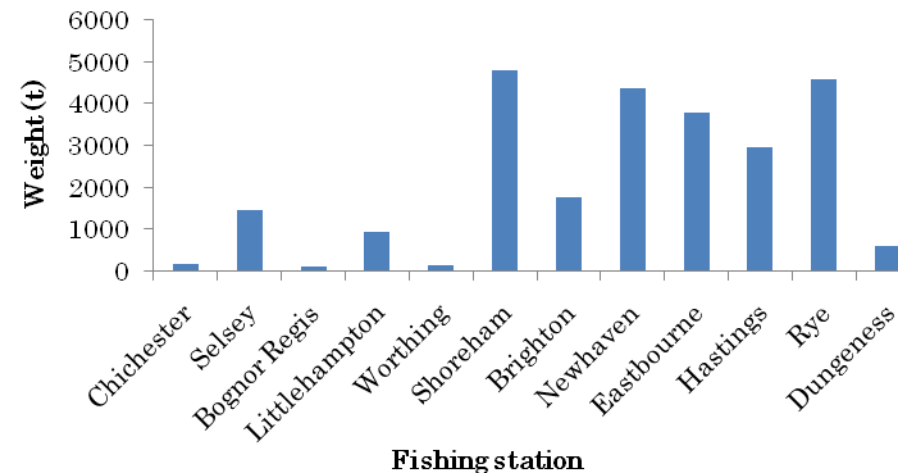
\* Vessels that solely use this gear type  
 \*\* Vessels which use both gear types

It is estimated that some 600+ fishermen are employed as fishermen working on vessels which are normally based in the Sussex District, these fishermen work on c. 300 boats, less than 10% of which are over 10 metres in length.

The majority of the fishing fleet operate static gear but around a fifth of vessels will undertake some mobile gear fishing (for example in Chichester Harbour the fleet will oyster dredge in the winter).

Some 26,000 tonnes of fish were landed into Sussex District ports in 2008 (this includes resident and non resident vessels). The species with the highest value of landings (in descending order) were; Dover sole, Whelk, Scallop, Bass and Lobster. Shoreham had the largest weight of fish and shellfish landed shortly followed by Rye, Newhaven, Eastbourne and Hastings (source M&FA 2009).

**Total weight of fish and shellfish landed into Sussex during 2008**



# Accounts 2008/2009

The Committee's year of account is from 1<sup>st</sup> April to 31<sup>st</sup> March. This report includes details of the Committee's income and other receipts for the year and a summary of expenditure. These figures give an overview of the financial activity for the year but they are not audited accounts and do not include the capital value of the Committee's assets.

## Income and other receipts.

The Committee's main source of income is by way of precept or levy from Kent County Council (5.30%), Brighton & Hove City Council (19.80%), West Sussex County Council (32.60%) and East Sussex County Council (42.30%). The receipts for the year were as follows:

Precepts:	<u>2008/9</u>	<u>2007/8</u>
Kent County Council	28,710.00	27,633.00
Brighton & Hove City Council	107,257.00	103,233.00
West Sussex County Council	176,594.00	169,970.00
East Sussex County Council	<u>229,139.00</u>	<u>220,544.00</u>
	541,700.00	521,380.00
Other income and receipts:		
Bank interest	13,773.68	12,648.25
Prosecution costs	3,697.04	1,802.50
Project receipts	2,353.50	89,494.42
Other receipts	<u>4,653.02</u>	<u>4,328.65</u>
	24,477.24	108,273.82
<b>Total income and other receipts for the year</b>	<b><u>£566,177.24</u></b>	<b><u>629,653.82</u></b>

The precept income for 2008/2009 represented an increase of 3.90% over the precept income for 2007/2008.

## Expenditure.

All of the expenditure is shown net of VAT, which is reclaimed by the Committee. I have divided it into non-patrol boat and patrol boat expenditure.

### Non-patrol boat expenditure

Although not directly reflected in the following figures, prosecution costs recovered and other receipts offset some of the expenditure. As can be seen, total non-patrol boat expenditure was down by £16,504, a decrease of 4.22%, mostly attributable to a reduction in project expenditure.

	<u>2008/9</u>	<u>2007/8</u>
Employees (+8.55%)		
Employee costs include salaries, employer's National Insurance and Superannuation contributions, expenses, uniforms, allowances and sundry items. The Committee has six full time and three part time employees:	£291,720	268,744
Office / workshop (-2.80%)		
The Committee leases Unit 6 and the rent and rates are the main items of expenditure.	£35,119	36,129
SRIB and vehicle (+24.09%)		
The RIB ("Sea Harrier") is the Committee's secondary means of carrying out sea patrols:	£8,772	7,069
General expenses (+21.39%)		
These include subscriptions, member's expenses, course fees, prosecutions and enforcement, liability insurances and sundry items:	£30,432	25,069
Project expenditure:	£8,443	53,980
<b>Total non-patrol boat expenditure (-4.22%):</b>	<b>£374,486</b>	<b>£390,990</b>

## Patrol boat expenditure

The main item of expenditure is the lease, which is fixed for a period of ten years from 15<sup>th</sup> December 2003. As can be seen the expenditure was up by £38,982, an increase of 21.99%. This was entirely due to a five year refit at a cost of £39,439.

	<u>2008/9</u>	<u>2007/8</u>
Leasing	116,095	<i>116,095</i>
Diesel	30,204	<i>23,336</i>
Insurance	13,175	<i>13,150</i>
Berthing		4,089
Repairs/maintenance	50,459	<i>16,243</i>
Equipment	3,533	<i>915</i>
Sundries (spares, signs, supplies etc)	2,816	<i>3,442</i>
	<b>£216,282</b>	<b>£177,300</b>

## Summary

### Receipts:

	<u>2008/9</u>	<u>2007/8</u>
Precepts	541,700	<i>521,380</i>
Other receipts	<u>24,477</u> 566,177	<i>108,274</i> 629,654
Payments		
Non-patrol boat	374,486	<i>390,990</i>
Patrol boat	<u>216,282</u> 590,768	<i>177,300</i> 568,291
Excess of receipts over payments:	<b>(24,591)</b>	<b>61,363</b>

The Committee's adjusted cash balances at the end of the year were:

Barclays Bank	32,431	<i>60,472</i>
Treasury deposit accounts	<u>200,000</u>	<i>200,000</i>
	<b>£232,431</b>	<b>£260,472</b>

A H Theaker LLB  
(Treasurer)



# Byelaws

Notice is hereby given that the following byelaws made by the Local Sea Fisheries Committee for the Sussex Sea Fisheries District, and duly confirmed by the Minister, are in force.

**Application to fish for scientific or breeding purposes**

*establishing a provision for taking of sea fish for scientific purposes within the Sussex District.*

**Winkle closed season**

*establishing a closed season for the collection of winkles within the Sussex District.*

**Lobster Permit**

*establishing a scheme which limits removal of more than two lobsters per person per day to holders of a lobster permit.*

**Dredging for, fishing for and taking of oysters and clams and the removal of cultch**

*establishing restrictions on the taking of oysters and clams in the Sussex District.*

**Fixed engines**

*establishing detailed rules for the placing of nets (engines) in the Sussex District.*

**Fishing for and taking of whelks**

*establishing rules for the taking of whelks from within the Sussex District.*

**Vessel Length**

*establishing the maximum permitted length of vessel to be used in the Sussex District.*

**Fishing instruments**

*establishing permitted fishing methods within the Sussex District.*

**Trawling exclusion**

*establishing areas where trawling is banned within the Sussex District.*

**Scallop byelaw**

*establishing a closed season for the use of scallop dredges*

# Example Information to Fishermen

## INFORMATION TO FISHERMEN

The following minimum sizes for finfish, crustacea and mollusc species, currently apply within the Sussex Sea Fisheries Committee's District.

Variations in size regulations may exist with respect to species captured outside Sea Area ICES Division VIId, which are then transported into the District.

Unless specified all measurements apply to the dimension of length. Additional information regarding the method of measurement for fish, crustacea and molluscs should be referred to if necessary.

### Finfish:

COD	35 cm	POLLACK	30 cm
WHITING	27 cm	HERRING	20 cm
SAITHE	35 cm	HORSE MACKEREL	15 cm
PLAICE	27 cm	HAKE	27 cm
DOVER SOLE	24 cm	MEGRIM	20 cm
BASS	36 cm	LING	63 cm
SARDINE	11 cm	MACKEREL	20 cm

### Crustacea:

LOBSTER ( <i>Homarus gammarus</i> )	87 mm	carapace length
EDIBLE CRAB ( <i>Cancer pagurus</i> )	140 mm	carapace width
VELVET CRAB ( <i>Necora puber</i> )	65 mm	carapace width
SPIDER CRAB ( <i>Maia squinado</i> )	130 mm (males)	carapace length
	120 mm (females)	carapace length
CRAWFISH ( <i>Palinurus spp.</i> )	95 mm	carapace length

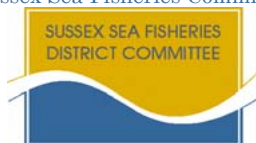
### Molluscs:

QUEEN SCALLOP ( <i>Chlamys spp</i> )	40 mm	shell width
KING SCALLOP ( <i>Pecten maximus</i> )	110 mm	shell width
WHELK ( <i>Buccinum undatum</i> )	45 mm	shell length
RAZOR CLAM ( <i>Ensis spp</i> )	10 cm	shell length
OYSTER (native) ( <i>Ostrea edulis</i> )	7 cm	*

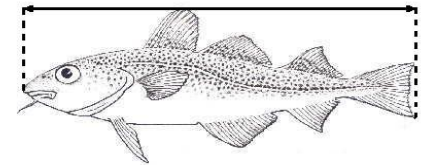
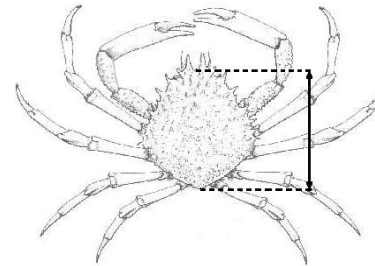
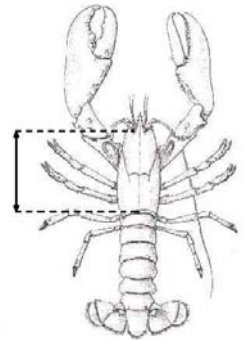
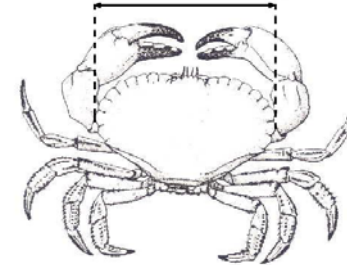
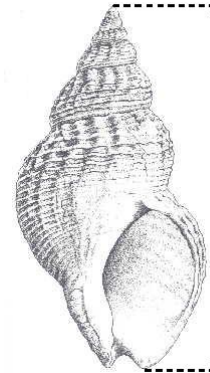
\* The shell must be unable to pass through a circular ring with a 70 mm internal diameter

It should be noted that these summarised regulations may be subject to change.

For additional information please contact your local SSFC Fisheries Officer,  
or the Clerk & Chief Fishery Officer at:  
Sussex Sea Fisheries Committee



## INFORMATION TO FISHERMEN



For additional information please contact your local SSFC Fisheries Officer,  
or the Clerk & Chief Fishery Officer at:

Sussex Sea Fisheries Committee

Unit 6, Highdown House, Shoreham Airport, Shoreham-by-Sea, West Sussex. BN43 5PB.





Sussex Sea Fisheries District Committee  
Annual Report 2008

Contact:  
Unit 6 Highdown House,  
Shoreham Airport,  
Shoreham-by-Sea,  
West Sussex.  
BN43 5PB

Tel. 01273 454407  
Fax. 01273 454408  
Email. [admin@sussex-sfc.gov.uk](mailto:admin@sussex-sfc.gov.uk)  
Web. [www.sussex-sfc.gov.uk](http://www.sussex-sfc.gov.uk)